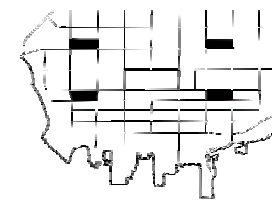


# Charlottetown Heritage Squares Conceptual Master Plans and Design Guidelines





*These squares have been sources of civic pride since the first community tree planting took place in 1884.” City of Charlottetown Website*

**April 2012**

Prepared for:  
City of Charlottetown  
Parks and Recreation

Prepared by:

**BDA** *Landscape Architects*

106 Hillsborough Road  
Riverview, NB Canada  
E1B 1R3

828 Main Street  
Sussex, NB Canada  
E4E 2M5







Rochford Square

The Project.....1

What We Heard *from the Community*.....3

Guiding Design Principles.....5

**CONCEPTS**

What We Heard *Connaught Square* .....9  
 Connaught Square Concept Plan.....10

What We Heard *Hillsborough Square* .....11  
 Hillsborough Square Concept Plan .....12

What We Heard *King Square* .....13  
 King Square Concept Plan .....14

What We Heard *Rochford Square* .....15  
 Rochford Square Concept Plan .....16

The Squares *Connecting the 5* .....17

**APPENDIX**

Magnitude of Cost

Plant Species (Documented Trees Planted in the Squares)

Example Trail Profile



# The Project

*“Charlottetown is also one of Canada’s founding Capital Cities. It has many important historical landscapes and streetscapes. It also has four historic squares: Rochford Square, Connaught Square, Hillsborough Square and Kings Square.” City of Charlottetown Parks Master Plan 2007, EDM*

Charlottetown’s squares are examples of the past and provide a historical and cultural link to the original city building and shaping of Charlottetown. The squares and the neighbourhood fabric within which they are woven remains today and is a rich resource for the community. Originally intended as lush green spaces for shade, rest, relaxation, social interaction and passive recreation, the squares still provide a welcomed natural space within the tight urban core.

Highlighted as significant spaces and sources of civic pride, BDA Landscape Architects were retained by the City of Charlottetown to facilitate committee, neighbourhood and community consultation sessions in order to develop concept plans for four of the heritage squares in Charlottetown’s downtown: Rochford Square, Connaught Square, Hillsborough Square and King Square. The objective of this exercise was to listen to the community and determine how they see the squares, how they use the squares and what makes these squares special.

BDA and the City hosted a neighbourhood session and community session

in order to hear from all the stakeholders. For each session approximately 25-35 individuals participated. Both evening sessions began with a brief presentation outlining the available background information and history of the four squares followed by breakout discussions. Participants were welcome to discuss as a group a particular square or any number of squares. After the groups had formulated thoughts for each of the squares a group representative was selected to bring their ideas to the entire group. All comments were recorded and have been outlined in the *“What We Heard”* segments of this document. For individuals that were unable to attend either session an email contact was provided.

With the background information collected, summary of initial community input and a visual analysis documented, BDA prepared draft concept plans and design guidelines for each of the four squares. These concept plans were presented in an open house evening session where the community and all previous participants were invited to review the plans and provide follow up comments. Once again an email was provided for residents that were unable to attend.

Final concept plans and design guidelines were prepared and are included in this document along with magnitude of cost estimates to be used as a guide.

What resonated with each community consultation was the appreciation of

these squares as greenspace within ‘their’ neighbourhood and the downtown. The protection of the squares, maintenance for high quality turf and continued tree planting were top priorities.



King Square



Rochford Square



Rochford Square





Rochford Square



King Square



Connaught Square



Hillsborough Square



# What We Heard *from the Community*



A community presentation and workshop session was held on Thursday February 2, 2012 and a neighbourhood session was held on Tuesday February 7, 2012. The participants were welcomed by various City representatives and the project consultant. Approximately 30 participants attended each presentation and took part in the hands-on workshop that allowed individuals to speak with respect to a particular Square or any number of the Squares. Following the table discussions each group had an opportunity to share their thinking with the entire group. All comments and remarks were recorded and are outlined herein. A comment sheet was also provided for additional feedback and a City contact was provided for remarks following the session or for those who were unable to attend to ensure equal opportunity to pass on comments.

The following is synthesis of the remarks as recorded, collected and received via email.

## Community Consultation Sessions

While the majority of the individuals comments were focused toward a particular square many remarks were also highlighted as 'blanket' comments and pertained to the four squares being reviewed.

**Use** - It was indicated that many people use the squares as **shortcuts**, as a place to **rest** and **relax**, as a place for **play**, as a **gathering** place and that many tourists and residents use the squares on a regular/daily basis. The need for **better walkways**, the need for more **seating**, and that there needs

to be **repairs to the lawn** areas was repeated.

**History** - Understanding the importance of the squares within the **historical context** of the City is important. Keep the names of each of the squares, they reflect the heritage.

**Consistency** - Guidelines and principles for design are integral to the squares. **Consistency** for the squares was considered to be important however it is important for each of the squares to be **'special' in their own way**. Each square should be celebrated differently while still acting as one in a collection of squares and as part of the urban fabric.

**Connectivity** - The point was made that the four quadrant squares should be **connected** in some manner. There was a suggestion of a Richmond Street pedestrian loop during the summer months, or a pedestrian and cycle linkage and that the squares should be linked in some way to Victoria Park.

**Play Equipment** - While the majority felt equipment was not required in all 4 of the squares there were no objections to **play** equipment being a component in the squares (Connaught and Hillsborough) so long as the play component is not the dominant feature within the square. There was a consensus that play equipment for **younger children** should be available as there is not an alternate within a short walk. Any equipment should be **consolidated** in one area of the square and not spread out in multiple zones.

Many individuals expressed the desire not to see 'plastic, primary colour' equipment but rather more imaginative and natural play installations. A suggestion was made to use older trees from within the square as they come down to create natural play features. It was also discussed that the play component in the square could be **sculptural, art** based or **historical** in reference. As an example the tugboat play structure in Halifax along the waterfront was mentioned. Many agreed that equipment should be restricted to **Hillsborough** and **Connaught** Square as there is currently equipment in these two Squares. In general sand was not the preferred option for protective play surfacing.

**Planting** - The trees should be **assessed, maintained** and there should **continue to be planting efforts** in each of the squares. There should also be a maintenance plan in place for all landscape elements (trees, lawns, planting beds) in the squares. It was suggested that the trees should be identified (species, planting date). Comment made suggesting the development of **tree preservation** guidelines.

Some felt there should be more ornamental floral planting beds remarking of the increased use in Rochford Square following the installation of the planting display. Others felt that grass and trees were sufficient.

It was stated that all four squares should be regraded, re-seeded and a **turf maintenance plan** established.

A suggestion to incorporate edible plants, flowering trees and fruit trees was highlighted.

**Walkways** - It was repeated by many that the walkways in all the squares **need to be replaced**. Stonedust was a preferred material so long as the paths could **compact** sufficiently for **accessibility**.

**Signage** - All the squares should have signage that is **not obtrusive**. Each should have appropriate interpretive information explaining the history of the particular square and the squares as part of the City's history.

**Programming** - Program the squares with activities that will **get the community together** during all seasons. Use programming as a way to **create that 'special' quality** for each square.

**Recreation** - It was suggested that the squares be considered as recreational spaces for **ice rinks** and small pick-up games of **soccer/basketball/hockey** if traffic in these areas could be mitigated.

**Amenities** - The squares should have **more benches, waste receptacles, lights and dog collection stations**. Most felt there should be one style of site furnishings within all four squares and that the style should reflect a heritage style.

**Public Art** - Artistic components should **compliment** the history of the squares (downtown Charlottetown), not simply art for the sake of having art.

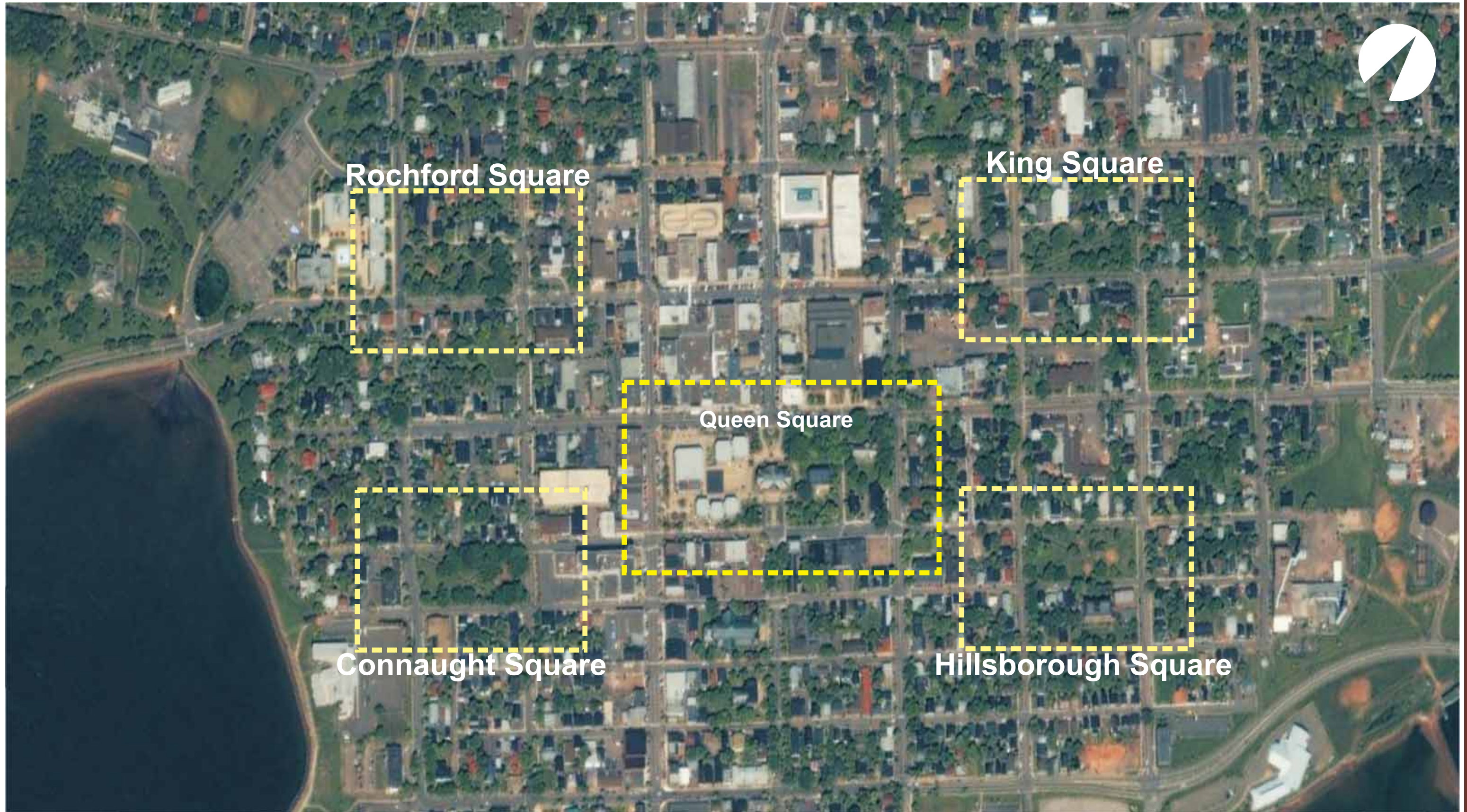
**Access** - Squares should allow for visitors arriving by vehicular, as well as pedestrians such as non metered, short term parking along perimeter of the squares.

**Encroachment** - the edges of the squares should be **protected, defined, and restored** to greenspace.

**Building Context** - The architecture surrounding the squares is as important as the efforts to **preserve** the integrity of the squares, both are related to each other. There needs to be **regulations** in place to **enforce** the scale, materials, and style of new developments in the immediate adjacency to the squares.

One additional comment pertaining to all the squares was "**less is more.**"







# Guiding Design Principles



*“The City of Charlottetown is committed to the preservation and continued use of the historic resources that contribute to the physical, social, educational and economic development of the municipality. The components of our heritage that help define our community’s unique character include sites, monuments, structures and buildings, streetscapes, squares, and environments of historic architectural, social and cultural significance.” Heritage Review Board Mission Statement*

Based on the comments received and the review of all available background information, the following principles have been established for the four squares. More specific guidelines have been outlined for each of the squares individually.

The guiding principles have been prepared to ensure the protection of the integrity and legacy of the squares in order to preserve the original intent of these significant community greenspaces. While the programming of the squares changes with the demographics and the times, the character of these passive urban greenspaces and shade canopy gardens must remain.

## Governance

The intent of coordinating a governing process is to ensure that the various City departments and existing committee groups are working together. In many of the proposed guidelines, a suggested existing committee or group has been indicated as the first contact point for review and consideration of proposals.

There are however items that should be reviewed by a broader committee with the City Parks and Recreation Department taking the lead. In these instances it is recommended that there be the establishment of an Interdepartmental Review Committee. This proposed committee should be made up of the various stakeholders including City Parks and Recreation representative, Urban Beautification representative, Planning/Heritage representative and Public Works representative. Other stakeholders may be included as required.

It is also recommended that the Interdepartmental Review Committee review the design guidelines on a pre-determined basis (example, every five years) to evaluate the effectiveness of the process.

In order to continue to foster strong communication ties and public ownership of the squares, each proposed change to the squares should be communicated to the public and the surrounding neighbourhoods. For example, when trees are to be planted or removed, make the neighbourhood aware, and as programs are initiated within the squares bring this to the attention of the public to encourage participation and involvement.



## Sense of Place and Programming

*“Parks are about the human experience and relationship to natural history and reinforce the City as “a great Canadian city.” City of Charlottetown Parks Master Plan 2007, EDM*

The squares are intended for community use, for rest, relaxation, to be able to experience urban green, for socialization, unstructured passive recreation and play.

There will continue to be a similarity in appearance of the four squares. Although consistent in structure and amenities, each will be special and different due to programming and neighbourhood specific expressions.

Hillsborough Square will continue to have a play space or component for young children. In collaboration with Holland College explore the possibility of developing and organizing

programs for special recreational events.

Connaught Square should continue to accommodate a small piece of play equipment for young children. There is the potential to have a winter ice surface and the re-establishment of small band concerts in the square.

King’s Square has a reference to the past industry in the neighbourhood with the installation of the Butcher chairs that could be enhanced with additional plantings and continued use of the square for outdoor fitness such as tai chi is encouraged.

Rochford Square has an ornate floral display and many remaining large trees to be protected. Adding additional seating to Rochford to continue to make this square a very passive place is encouraged along with small neighbourhood and community social events.

By programming the various squares to host small festivals, music and theatre in the park, snow sculptures, storytime series and other organized activities, each of the squares will become uniquely special places in downtown Charlottetown.

## Landscape

The most significant elements to each of the squares are the majestic trees and the lawn areas. Open lawn areas are to be protected for passive, unorganized recreation.

## Lawn

The lawn areas require a maintenance program that ensures a high quality turf that is well drained, fertilized, toppedressed and low areas corrected for positive drainage.







There should continue to be planting efforts in the squares, and this should be part of the maintenance/management plan. Tree species should be selected from the list of species originally planted and documented during the first arbour days with the exception of species that have historically not done well in this region.

It is recommended that trees planted should be 60-70mm cal. in size. Monocultures are to be avoided by planting a variety of species in each square. Shade trees should be planted to create allées within the squares by defining the walkways and the perimeter of the squares. Tree planting is encouraged on both sides of the street where possible.

Conifer trees were not indicated as part of the original species selections and should not be planted in the squares as the squares represent high canopy shade tree collections.

A tree management plan for the squares and surrounding streets should be established by the City with the assistance of an arborist. This plan could be initiated immediately and be ongoing.



Encroachment along the edges of each square needs to be restored. Definition of each square's boundary is to be restored with a new curb.

It is recommended that a turf maintenance plan be prepared and implemented by the Parks and Recreation Department of the City. A maintenance plan for each of the squares could be a first priority project.

#### Trees

The existing trees require an ongoing maintenance program that monitors the health of each tree, provides the City with an inventory of the trees in each square (species, age, health) and the necessary pruning to keep the trees in good health.



#### Walkways

The existing walkway patterns should be respected. As existing walkways are to be replaced, the asphalt should be removed and replaced with an alternate material. The suggested material for replacement is stonedust. It is recommended to implement a pilot project using stonedust in one of the squares to determine the desirability and maintenance requirements. After reviewing the pilot, determine with the committee if alternate materials should be explored. The trails should be widened to accommodate current snow removal equipment (approximately 2.5m width). In order to minimize ongoing maintenance, trails will require an appropriately compacted

granular base. Edging may be desired to control grass migrating into the edges of the walkways. (See example detail in the Appendix at the end of this document)

#### Ornamental Planting (Shrub and Floral Display)

The squares are high canopy shade tree gardens. The lawn and the trees are the primary landscape components of the squares. Small isolated planting beds within the squares should be removed and replaced with grass.



Where there is significant community initiative to develop and maintain floral displays, the community group or representatives must present plans to the Urban Beautification committee for consideration. Urban Beautification will review requests that must include: a plan, anticipated maintenance program and community representatives that will be responsible for the ongoing planting and maintenance of the bed(s). Urban Beautification representative(s) will bring forward requests demonstrating sufficient commitment to one of the semi annual Interdepartmental Committee Review meetings for a final decision.

Plant species should be restricted to heritage shrubs, perennials and bulb species. Beds should be restricted to the square corners, centrally located or as a way of highlighting another feature within the squares, for example in conjunction with the Butcher chairs in King Square.





# Guiding Design Principles

## Interpretive Material and Public Art

Interpretive material and public art are considered acceptable within the squares.



Interpretive material may take the form of art. Similar to play equipment interpretive installations and public art should not be obtrusive or obstruct views within the square.

Both interpretive and art considered for a particular square must first be reviewed by the Heritage Committee. Heritage Committee representative(s) will bring forward appropriate requests to one of the semi annual Interdepartmental Committee Review meetings for a final decision.

Considerations for each piece that the Heritage Committee and Interdepartmental Review Committee would be reviewing must include items such as: references to the specific neighbourhood, what will be the anticipated maintenance and upkeep, the scale and size, materials and where the piece might be located.

Locations within the squares for interpretive material and art pieces are dependent on the square and the proposed installation. In most instances the preferred locations are either at the convergence of the walkways, centrally located in the square or at the corners of the square.

## Play Equipment

The squares are intended for passive, non structured play within the grass quadrants. However, until play equipment is located within a short walk, approximately 5 minutes or less, of the existing downtown neighbourhoods, equipment should continue to be allowed within Connaught Square and Hillsborough Square.

Play equipment components should be restricted to small children (ages 18months to 5 years) in both squares and must not obstruct views within and into the square.





Any play equipment within the squares should not be primary colours and preferably not plastic. Low profile play pieces such as small net climbers, stepping stones, dance chimes, chess, checkers, hopscotch or other painted games could be incorporated. Play features should be restricted to one quadrant within the square.

Currently the protective play surface treatment for both squares is sand. The sand should be removed and replaced with a poured in place rubber, rubber tile or artificial turf. Peagravel protective surfacing would be considered an acceptable alternative provided the protective area is restricted to the minimum requirements of the equipment and is properly contained to avoid creeping into the surrounding grass spaces.

The existing equipment in Connaught Square and Hillsborough Square should be removed and relocated.

Although it is recommended that play equipment should be restricted to younger children, older children, young adults, adults and seniors are still encouraged to use the squares for passive unorganized recreation. The squares should continue to be a place where small groups play with a ball, toss a frisbee, play tag, etc.

Additional seating should be incorporated in the areas of play equipment to allow for close supervision.

Play equipment should be selected by the City Parks and Recreation Department with neighbourhood consultation.



### Amenities

The squares have been identified as places in which many people enjoy sitting and relaxing. Currently the site amenities such as park benches, waste receptacles and light standards are not a consistent style. In some instances there are multiple styles of amenities within a square.

In order to create consistency of park amenities, existing site furnishings should be removed and relocated outside the square and replaced with the City's heritage bench (same as John A. MacDonald sculpture downtown).

Benches should be located on a proper pad along walkways facing into the square. Additional benches should be situated in proximity to play areas within Hillsborough Square and Connaught Square.



Waste receptacles should be located along the walkways (one each diagonal) and closer to a corner of the square. Waste receptacles should be black in colour and must have three separate bins for waste and recyclables.

The squares are used by the surrounding neighbourhoods as a popular place to walk dogs. Dog collection posts with bags should be installed at two locations within each square, with one on each diagonal.

Lighting is proposed around the perimeter of each square, along both sides of the street. Rochford Square is a good example. Lighting should be all one style for all squares and continue to be underground wiring.



### Structures

Structures within the park are to be restricted to temporary facilities or mobile structures to provide shelter or cover for community events and gatherings.

Permanent built structures should not be located within the squares.

### Identification and Signage

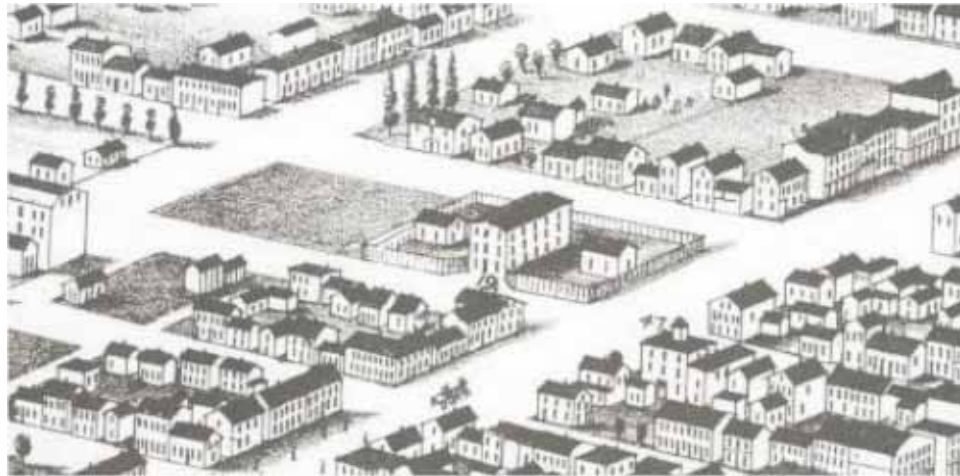
The squares each contain an interpretive panel that highlights the significance of each of the four neighbourhoods and the square. Additional interpretive signage is not required.

Required park signage that indicates the hours the square's are open to the public, no smoking, etc., should be consistent for all the squares and should be more historical in appearance (font, material, etc.).

Identification of each square, at the four corner pedestrian access points, should be considered. Rather than an additional signs, granite engraved name plates should be considered. Each would have the name of the square and could be installed flush with the level of the walkway surface.



# What We Heard *Connaught Square*



*In both the community session and the neighbourhood session there was a consensus that Connaught Square is in need of some attention, perhaps much more so than the other three squares, in part due to the damage that has impacted the high canopy trees in the park. This year marks the 100th anniversary of the removal of the jail from Connaught Square and the beginning of its beautification, this was mentioned as an opportunity to celebrate this public greenspace and revisit its 'beautification.'*

*According to the participants Connaught Square is very well used and enjoyed by many small children and guardians as there are no other existing playgrounds in the downtown within a short walk. The use in the square will increase in the coming years with new development about to take shape. Connaught Square was a very active square for the community in the past. There were stories of the lower end of the square being flooded for skating, baseball games between the 'east-enders' and the 'west-enders', volleyball games and the army band used to play music for the community.*

*The buildings surrounding Connaught Square do not provide as strong a sense of enclosure or back drop as the three other squares. Much of the original character of the square's perimeter architecture has been relocated, torn down and in their places are now parking areas or buildings not indicative of the original character, style and scale of this downtown neighborhood.*

*Comments we heard pertaining to Connaught Square are outlined here:*

## General

- Must make Connaught Square a **special place**.
- **Balance activities** in the park and ensure safety for small children.
- **Less is more** was agreed upon.
- The square must remain a place to **sit** and **relax**, a **retreat**.

## Sense of Enclosure

- Consider enclosing with a low hedge or fence similar to Halifax Public Gardens to help **define the edges** of the square.

## History

- Tie history of the Square into the site and **celebrate the history** of the square.
- Interpretive panels to highlight the significance of the park.
- There may be remaining pieces of the jail in square including a piece of the foundation (curbing), identify and protect.

## Art

- Incorporate art into the Square similar to the King Square butcher chairs
- Would like to see art in the square, it could be interactive and playful.

## Landscaping

- Consider creating a different patterning with the trees.
- **Allée, arbours, fruit trees** would be welcomed.
- There is a desire for **more trees** and **larger trees**.
- While flower beds are beautiful, they are not necessary in Connaught Square.

## Play Features and Activities

- Play equipment should continue to be part of this Square but there does not need to be more than is there currently.
- Play features should be for **younger children**. Older children should use the **passive** unstructured recreation opportunities in the Square.
- The current expanse of sand around the play ground should be **restricted**.
- Play features could be art based and could reference the historical significance of the Square.
- Consider water splash play feature where rink used to be located at the lower end of the Square.
- Re-establish the **rink** during the winter months.
- Consider lawn bowling as an appropriate activity in the Square.

## Park Amenities

- Provide better lighting.
- Consider water feature.

## Entertainment, Social Interaction and Gatherings

- Find ways to get people in the community out and into the Square. "People will take part if they feel they are getting

something for free."

- Have community **corn boils, ice cream socials, and music** in the Square for smaller crowds.

## Connectivity

- Connect Connaught Square to the other three squares, Queen Square and Victoria Park with pedestrian/bicycle streets (Victoria Park Roadway extension)

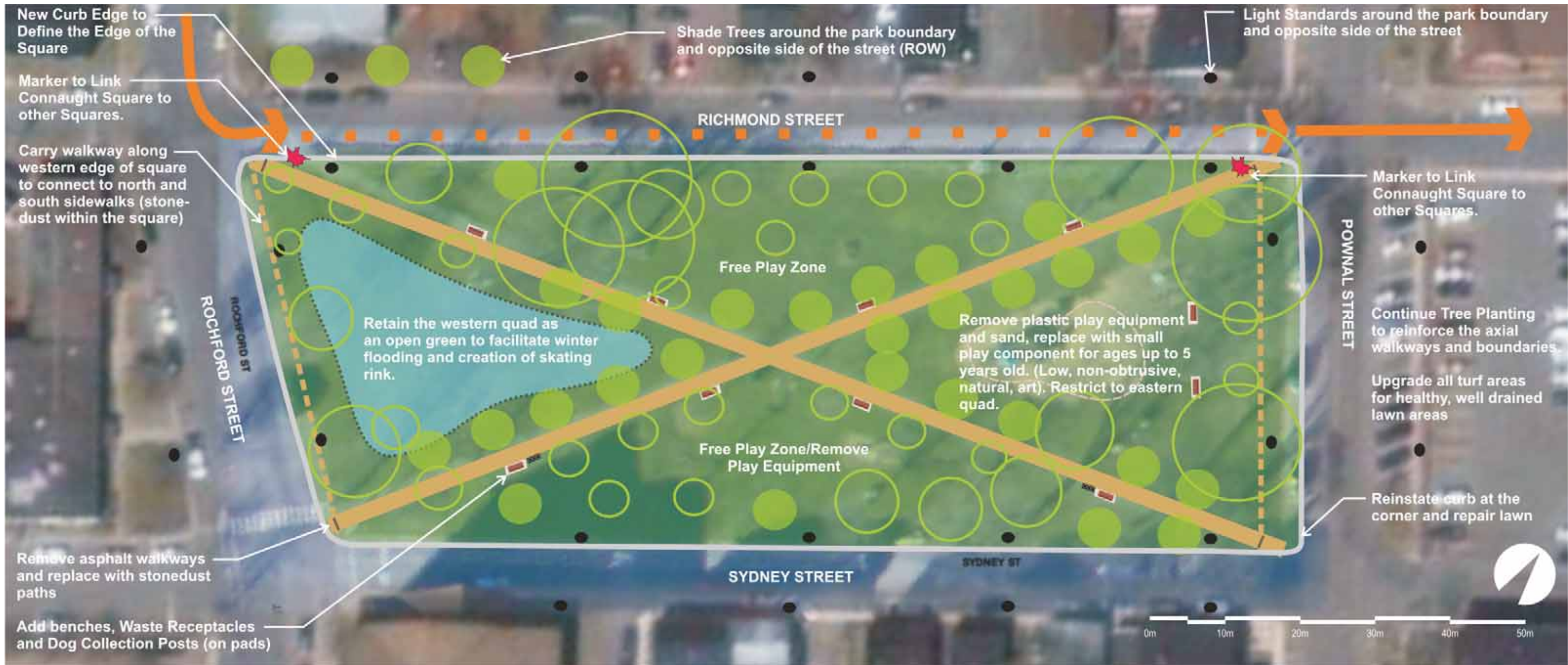
## Design Approach and Principles

The design approach for Connaught Square is to:

- **ensure well maintained, well drained, quality lawn areas**
- **inventory, assess, maintain the existing trees**
- **replace and maintain the walkways**
- **repair all encroachment and replace the perimeter curb to define the square boundary**
- continue to have an ongoing tree planting strategy that is a random mix of species derived from the original plant list not a mono culture
- include tree planting opposite street side surrounding the park
- include a walkway along the western boundary to connect the north and south sidewalks
- install lighting around the square boundary on each side of the street (under ground wiring)
- add benches, waste receptacles, dog collection posts
- provide infrastructure for water and power for neighbourhood/community programming and events
- highlight the remnants of the original jail within the square (interpretation)
- markers to identify the Square within the walking tour of the downtown
- Square identification at each corner (ex. granite name plate in the stonedust walkways)
- remove existing play equipment and replace with a play area that is non-obstrusive may incorporate art
- sense of enclosure to be created by development, not a physical barrier, keep the squares open
- consistency of materials for walkways, plant species, defined edge, and ornaments such as benches.
- enforce design guidelines for surrounding developments.



# Concept *Connaught Square*





# What We Heard *Hillsborough Square*



**“We like our square.”**

*Hillsborough Square, once referred to as Notre Dame Square, was well represented at both the community session and the neighbourhood session. This square is used for visitation, recreation and for appreciation of the natural environment in this urban setting. Many of the surrounding properties do not have individual yards and Hillsborough Square fulfills the need for greenspace.*

*According to the participants, and similar to Connaught Square, Hillsborough Square is very well used and enjoyed by many children and guardians as there are no other existing playgrounds in the downtown within a short walk. It was indicated that the nuns in the convent bordering the square enjoy watching children playing in the square. There was concern expressed about the speed of vehicle traffic around the square and the young children playing that might wander into the surrounding streets.*

*Hillsborough Square is a popular greenspace for local residents and visitors alike. Tourists frequent this square as they explore the downtown coming in on the numerous cruise ships. There is a rich collection of perimeter architecture that provides a backdrop to the square and frames the space..*

*Comments we heard pertaining to Hillsborough Square are outlined.*

## General

- Re-establish a **central focus** in the park.
- Want to ensure that this square remains a **place for people to gather**.
- Enforce no smoking bylaw.
- Reduce vehicle speed around the square.
- Paths should be wider and **softer, replace** with stonedust walkways.

- An improved environment in the park would facilitate greater usage by a more diverse demographic.
- **Seasonal features** that might make this square special, involve the corporate community and the local volunteers (example - twinkle lights in the trees).

## Sense of Enclosure

- Need to define and strengthen the breaks in the Square's **edge** (curb, low hedge but nothing that would block views into the square).

## History

- Public art representing the history of the area (Notre Dame Convent was one suggestion)

## Art

- Re-establish a central focus in the park, could be an art component perhaps in reference to the convent, sundial, birdbath, etc..

## Landscaping

- Would like to see **flowering trees** incorporated into planting efforts and could be a community initiative, **variety of tree species**, shrubs and conifers are desired.
- Would like to see more flowers for **colour** and interest, an attraction, display.
- Low hedge, **define edge** around play area.
- Would like to see a planting strategy for the future, would like to see **larger trees** planted as part of the ongoing re-forestation strategy.
- Should continue to plant the **perimeter trees**.
- Remove pavement encroachment and re-green.

## Play Features and Activities

- **Consolidate** play equipment rather than spread out in multiple zones.
- Play equipment should be in the square but should be consolidated and **not be the dominant feature** and could be an artful piece.
- Play equipment should not detract from the square, **low profile** components that do not obstruct views of the square and could include features such as chess board, stepping stones, etc.
- Consider hedge maze as playful element in square.

## Park Amenities

- There is a desire for **underground wiring** and better lighting. Lighting in the park should be down lighting to avoid light trespass.
- There are a number of people who walk their **dogs** in the square and there is a need to have dog pick up bag stations.
- **More benches** are required but benches that face into the park.

- Would like to see picnic tables in the square and proper garbage receptacles.
- Mailbox on Richmond Street needs to be fixed or relocated.

## Entertainment, Social Interaction and Gatherings

- Would like to see music in the square, something to reach out to the community, have them participate and come together
- Create the spaces and they will come.
- **Mobile bandstand** would be a way to host small events.
- Would be great to see **performing arts** in the park, often tai chi and yoga groups are in this park, opportunity for Holland College, instructional component to **programming** the space.

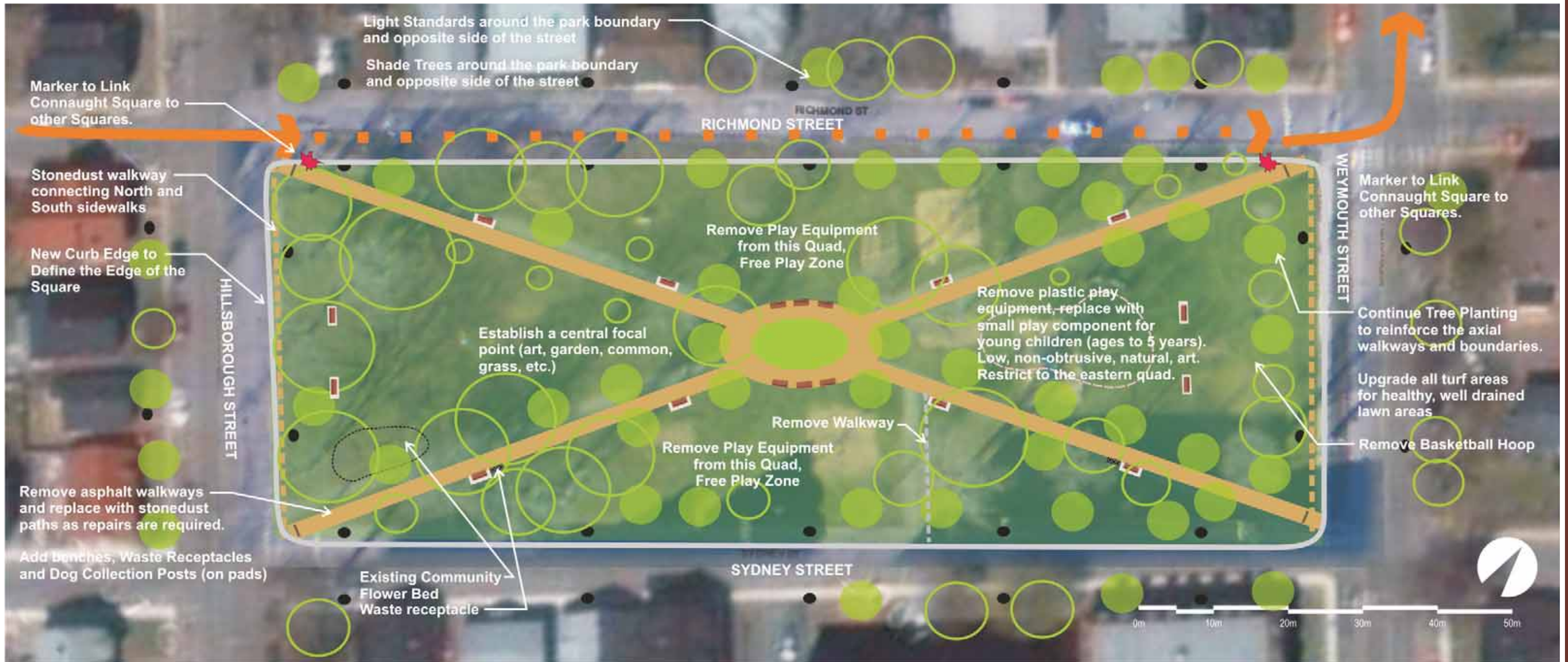
## Design Approach and Principles

The design approach for Hillsborough Square is to:

- **ensure well maintained, well drained, quality lawn areas**
- **inventory, assess, maintain the existing trees**
- **replace and maintain the walkways**
- **replace the perimeter curb to define the square boundary**
- continue to have an ongoing tree planting strategy that is a random mix of species derived from the original plant list - deciduous tree garden, incorporate flower species from the list as well
- tree planting opposite street side surrounding the park
- install lighting around the square boundary on each side of the street (under ground wiring)
- benches, waste receptacles, dog collection posts
- provide infrastructure for water and power for neighbourhood/community programming
- markers to identify the square within the walking tour of the downtown and connect to the other Squares
- square identification at each corner (ex. granite name plate in the walkways)
- remove existing play equipment and replace with a play area that is non-obstrusive (may incorporate art) for ages up to 12 years.
- re-establish a central focal point
- incorporate historical references, art, interpretive, planting, story of the neighbourhood
- consistency of materials for walkways, plant species, defined edge, and ornaments such as benches.



# Concept Hillsborough Square





# What We Heard *King Square*



*As with the other squares, there was good representation for King Square at both the community and neighbourhood sessions.*

*This square is referenced time and again as a great linkage, used as a shortcut, and frequented by users who are walking their pets.*

*The community group and the neighbourhood group echoed the comments for the other Squares. This Square was reflected upon as a “great and busy walking area.”*

*The participants referenced the socials that used to take place in the square and that they would welcome the return of that community activity and life.*

## General

- Create a place where “Islanders and tourists” can stop to **relax**, have a picnic, a place to **play** (young and old).
- Should remain a **place to gather**.
- The Square is for **all ages** to enjoy.
- Walkways need to be replaced, some feel they should be paved others suggested stonedust. Main concern is that the walkways be **accessible** and **well compacted**.
- Suggestion to widen the walkway to accommodate winter clearing
- Parking restrictions around the square need to be enforced to control encroachment.

## History

- There should be interpretive story line about King Square within the square and a **story line** that connects Kings Square to the other 3 quadrant squares and Queen’s Square.

## Art

- The butcher chairs are an art piece that is well used in the Square that appropriately references the industrial past of this area within Charlottetown. (it was noted they are used by a gymnastics group).

## Landscaping

- The square needs to be **re-graded** and **re-seeded**.
- The trees in the square are in need of an assessment and pruning.
- Would love to see more **variety of plant species** and include shrubs.
- Take back the **edges** that have been encroached upon and return to the Square.

## Play Features and Activity

- With play features located in Hillsborough Square there was sense that play equipment was **not required** to in King Square.
- The butcher chairs are often used in a playful way and passive recreation is sufficient in this square.
- Want to ensure that people will be able to walk their pets.

## Park Amenities

- Would like to see **more benches** in the park.
- Would love to see **picnic tables** in the square.
- Need for better **lighting** with an ‘old fashioned’ look.
- Incorporate **waste receptacles** that have an ‘antique’ look.

## Entertainment, Social Interactions and Gatherings

- Should have **socials** in the square, Church could use in the summertime for outdoor service.

## Design Approach and Principles

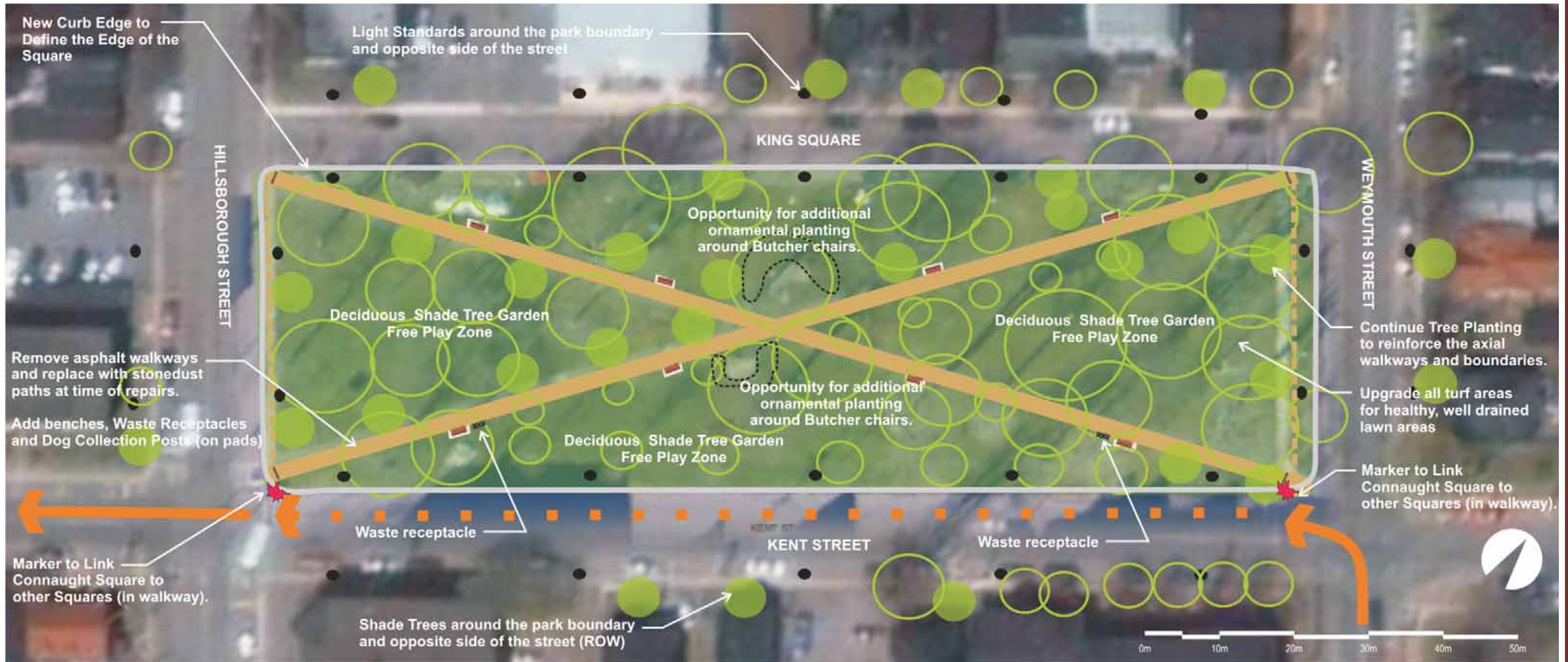
The design approach for King Square is to:

- **ensure well maintained, well drained, quality lawn areas**
- **inventory, assess, maintain the existing trees**
- **replace and maintain the walkways**
- **repair all encroachment and replace the perimeter curb to define the square boundary**
- continue to have an ongoing tree planting strategy that is a random mix of species derived from the original plant list, deciduous tree garden, no a monoculture.
- tree planting opposite street side surrounding the park
- install lighting around the square boundary on each side of the street (under ground wiring)
- add benches, waste receptacles, dog collection posts
- provide infrastructure for water and power for

- neighbourhood/community programming
- markers to identify the square within the walking tour of the downtown
- square identification at each corner (ex. granite name plate in the stonedust walkways)
- ornamental planting, compliment the art piece in the park
- consistency of materials for walkways, plant species, defined edge, and ornaments such as benches.



# Concept *King Square*





# What We Heard *Rochford Square*



*Rochford Square was identified by the groups as a popular square for wedding photos, tourist photos and City of Charlottetown promotional material. The square has become a recognized image with its ornamental plantings at the western end of the square and the dramatic trees still thriving in this greenspace.*

## General

- Architecture being built around the perimeter of the square must have specific **requirements** to respect the integrity (materials, scale, style, etc.).
- Should remain **passive** recreation in this park.
- Walkways need to be improved.
- Should be an education/information session about not dumping snow into the square from private properties around the square.
- Protect the thinking about nature in the City in the 19<sup>th</sup> Century that is evident in the park.
- Take **maintenance** into consideration with all components of the Square.
- **“less is more”**
- Squares for **rest, relaxation, cooler, greener, grass.**
- Since many around the core of these parks do not have private yards the parks need to keep that in mind – **play, trees, grass, benches and flowers.**
- Keep the Squares **passive and public.**
- Used for beauty, **tranquility, shade**, space for **families.**
- Garbage pick up and bins lining the street, is there an alternate location or solution?

## Sense of Enclosure

- Maintain buildings around the edges of the park, enforce heritage.
- Guidelines for the surrounding architecture.
- Tall buildings around the square should have height restrictions.

## History

- Heritage of the square to be preserved, stay the same but allow change.

## Art

- Public art should have a series of criteria and guidelines...any public component in the park should also have a maintenance budget attached.
- Guidelines for art should be in place to facilitate decision making.

## Landscaping

- **Training** program required for maintenance staff that are doing the grass trimming at the base of the trees to protect the trees.
- The water truck currently drives up to the mound for watering purposes and ruts the lawn areas, this needs to stop.
- Some **drainage problems** and puddling that should be corrected in the square.
- **Encroachment** affecting trees needs to be addressed.
- The rhododendrons have been spectacular.
- Would like to see the **continuation of planting trees** in the square.
- Walkways in the park are well used and important to remain.
- Take back the edges and protect the trees.
- The floral display is an attraction, would like to see the continuation of heritage species in the beds.
- Asphalt trails not appealing, would like the broken pathways replaced with stonedust.
- Don't lose sight of majestic trees, **echo species used originally.**
- Some sun in the park is nice to have, the high canopy trees can make it quite shaded.
- Some like the existing raised bed more than others, but well used and enjoyed by the community.
- Would like the city to consider incorporating conifer trees in the squares for winter green, focus should still be primarily the high **canopy deciduous trees.**

## Play Features and Activity

- Small equipment is acceptable in the squares but not manufactured catalogue ordered, can be more imaginative (example: using the mounded planting bed as a slide in winter). Kids used to **slide** in the Square from the upper portion to the lower end.

## Park Amenities

- Should not be built structures in the park, **only temporary** or mobile structures.
- Needs to be dog collection stations.
- **Benches** should be fixed in place.

- More benches should be in the park would like to see at least 8-10, the 3 on the mound are well used.
- Would like to see **waste receptacles** near the benches
- Improved garbage receptacles, City vehicles should not be driving on the walkways or lawn areas to collect the material in the bins.

## Connectivity

- **Sidewalk** at lower end of square is desirable as a continuation along the western end linking the sidewalk to the north and south of the Square.
- Would like to see a sidewalk on the west side of the square, better materials in the pathways, more benches.
- Used as a direct walk to downtown.

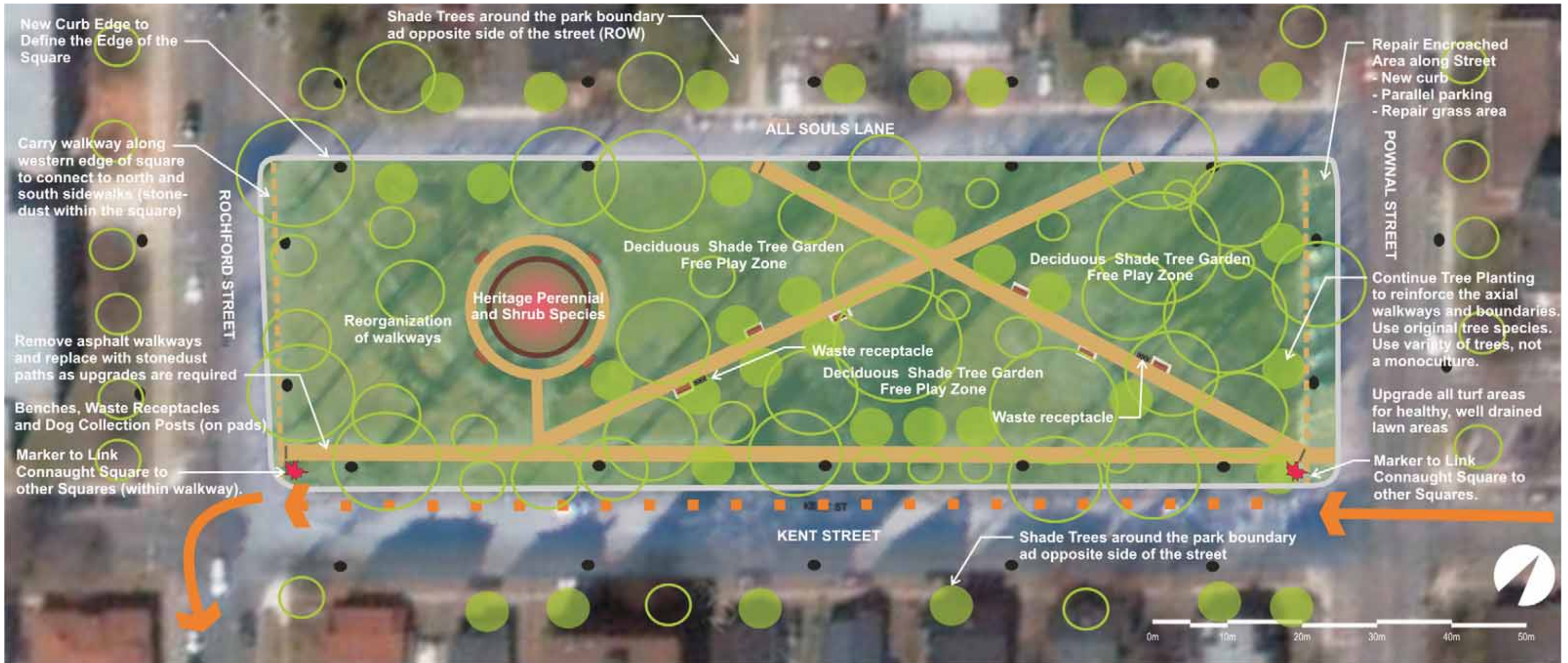
## Design Approach and Principles

The design approach for Rochford Square is to:

- **ensure well maintained, well drained, quality lawn areas**
- **inventory, assess, maintain the existing trees**
- **replace and maintain the walkways**
- **repair all encroachment and replace the perimeter curb to define the square boundary**
- continue to have an ongoing tree planting strategy that is a random mix of species derived from the original plant list, deciduous tree garden, not a monoculture.
- tree planting opposite street side surrounding the park
- include a walkway along the western boundary to connect the north and south sidewalks
- add benches, waste receptacles, dog collection posts
- provide infrastructure for water and power for neighbourhood/community programming, existing planting markers to identify the square within the walking tour of the downtown
- square identification at each corner (ex. granite name plate in the stonedust walkways)
- consistency of materials for walkways, plant species, defined edge, and ornaments such as benches.



# Concept Rochford Square





# The Squares *Connecting the 5*



King Square, Rochford Square, Connaught Square and Hillsborough Square are part of the downtown fabric and are linked to Queen Square as remaining elements of the original city layout and structure.

Although each individual and special, physically connecting the squares to be enjoyed and viewed as one piece within the downtown core of Charlottetown was something that was brought up several times during the community consultation sessions. There is a desire to strengthen the connection between the four squares with Queen square.

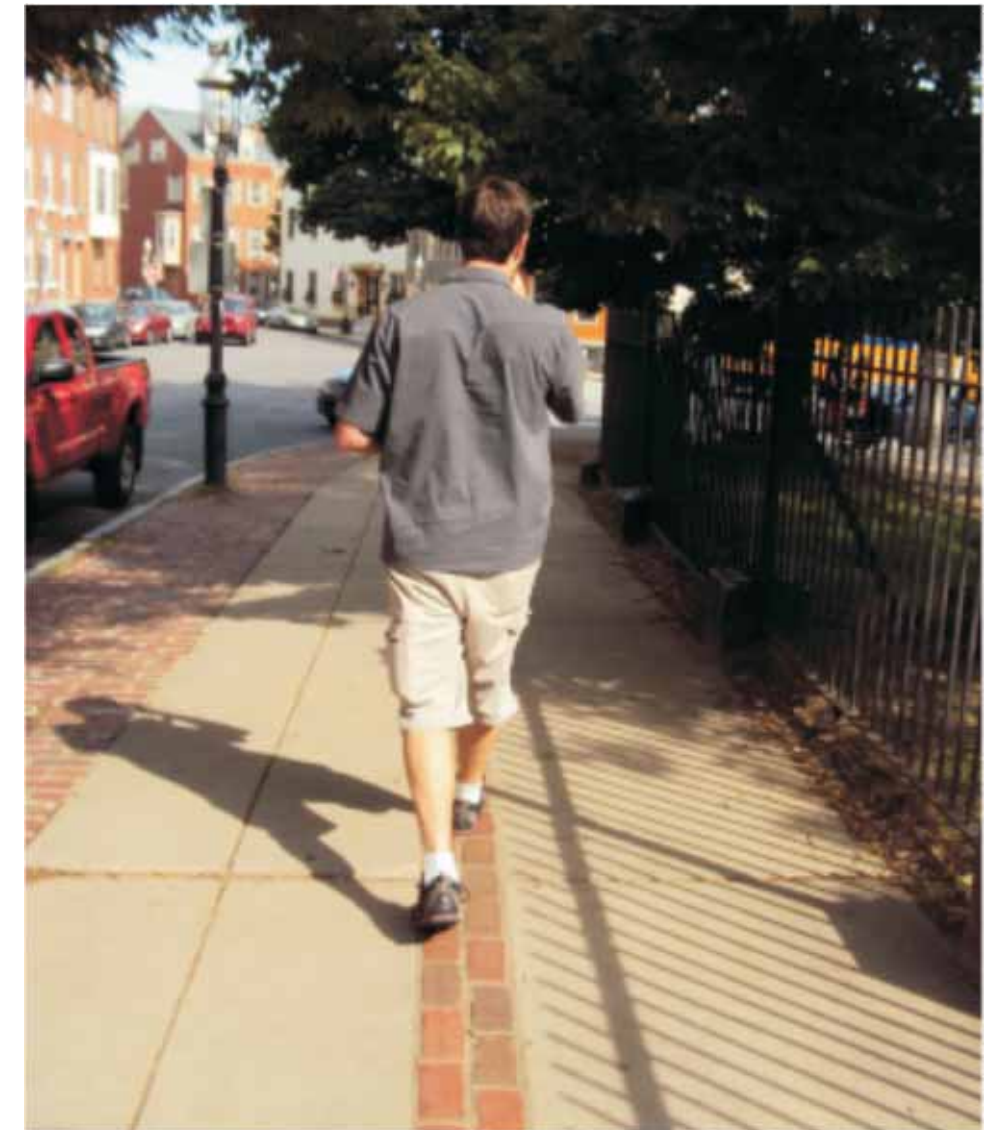
There will be several elements within the squares that will provide a sense of continuity. As outlined in the design principles it is recommended to provide consistent amenities within each of the squares to reinforce the squares as a collection of greenspaces. Future tree species should all be from the

original plant list.

Considering the significance of the squares to the original framework of Charlottetown and the structure of the city, an interpretive walking and/or cycle loop is proposed. It is proposed to use the squares as a way of exploring the downtown. This is a walkable distance that takes participants to various neighbourhoods, by shops and stores, by institutions and past restaurants. What a wonderful way to see and take part in many of the riches Charlottetown has to offer, anchored by majestic tree canopy gardens.

This allows residents, school groups, and visitors alike an opportunity to see each of the squares on their own and still appreciate them as a collective within the City structure.

Defining the trail or walk can be done very subtly so as not to detract from the squares, imprinting within side corner sidewalks and special marking can be implemented to guide the visitor.



Example markings and trail identification features.









## APPENDIX - Magnitude of Cost

The following outlines a magnitude of cost for each of the squares based on the concept plans developed and are recommended as a guide only. A more detailed cost estimate should be determined as more detailed design plans are developed.

### Hillsborough Square

Item No.	Description	Estimated Item Cost
1	New concrete curbing	\$35,000.00
2	Benches and pads below	\$40,000.00
3	Stonedust walkways	\$25,000.00
4	Topsoil and Seed Repair	\$50,000.00
5	Shade Trees (60mm Cal.)	\$30,000.00
6	Historic Light Standards (with outlet and granite base), Underground electrical (conduit, wire, trenching, backfilling)	\$300,000.00
7	Park furniture (waste receptacles, bike rack, dog collection)	\$8,000.00
8	Removals	\$25,000.00
Total		\$513,000.00

\*Estimate does not include taxes

### Allowances

9	New Play Equipment and surfacing	\$40,000-60,000
10	Stonedust trail edging	\$10,000.00
11	Square Marker to link squares	\$5,000.00

### Connaught Square

Item No.	Description	Estimated Item Cost
1	New concrete curbing	\$35,000.00
2	Benches and pads below	\$25,000.00
3	Stonedust walkways	\$25,000.00
4	Topsoil and Seed Repair	\$45,000.00
5	Shade Trees (60mm Cal.)	\$20,000.00
6	Historic Light Standards (with outlet and granite base), Underground electrical (conduit, wire, trenching, backfilling)	\$270,000.00
7	Park furniture (waste receptacles, bike rack, dog collection)	\$8,000.00
8	Removals	\$25,000.00
Total		\$453,000.00

\*Estimate does not include taxes

### Allowances

9	New Play Equipment and surfacing	\$40,000-60,000
10	Stonedust trail edging	\$10,000.00
11	Square Marker to link squares	\$5,000.00



**King Square**

Item No.	Description	Estimated Item Cost
1	New concrete curbing	\$35,000.00
2	Benches and pads below	\$20,000.00
3	Stonedust walkways	\$25,000.00
4	Topsoil and Seed Repair	\$40,000.00
5	Shade Trees (60mm Cal.)	\$20,000.00
6	Historic Light Standards (with outlet and granite base), Underground electrical (conduit, wire, trenching, backfilling)	\$300,000.00
7	Park furniture (waste receptacles, bike rack, dog collection)	\$8,000.00
8	Removals	\$10,000.00
	Total	\$458,000.00

\*Estimate does not include taxes

**Allowances**

9	Stonedust trail edging	\$10,000.00
10	Square Marker to link squares	\$5,000.00

**Rochford Square**

1	New concrete curbing	\$35,000.00
2	Benches and pads below	\$20,000.00
3	Stonedust walkways	\$35,000.00
4	Topsoil and Seed Repair	\$35,000.00
5	Shade Trees (60mm Cal.)	\$25,000.00
6	Historic Light Standards (with outlet and granite base), Underground electrical (conduit, wire, trenching, backfilling)	\$300,000.00
7	Park furniture (waste receptacles, bike rack, dog collection)	\$8,000.00
8	Removals	\$10,000.00
	Total	\$468,000.00

\*Estimate does not include taxes

**Allowances**

9	Stonedust trail edging	\$15,000.00
10	Square Marker to link squares	\$5,000.00



Rochford Square



# APPENDIX - Documents Tree Species Planted in the Squares

Many of the tree species originally planted in the squares and along the streets in Charlottetown can be found in past newspaper references.

## Queen Square

Golden Willow - 7  
 Cherry - 2  
 White Birch - 12  
 Willow - 3  
 Birch - 10  
 Rock Maple - 32  
 Oak - 9  
 Mountain Ash - 12  
 Elm - 12  
 Limes - 4  
 Choke Cherry - 2  
 Twin Birch - 1  
 White Maple - 2  
 Poplar - 1  
 Horse Chestnut - 6  
 Weeping Elm - 1  
 Juniper - 1  
 Red Dog Trees - 8  
 Mountain willow - 1  
 Norway Maple - 2

## Hillsborough Square

Rock Maple - 13  
 Horse Chestnut - 4  
 Black walnut - 7  
 Birch - 9  
 Juniper - 2  
 Thorn - 2  
 Poplar - 2  
 Wild cherry - 2  
 Golden willow - 5

## King Square

Elm - 8  
 Rock maple - 6  
 Maple - 2  
 White birch - 13  
 Norway maple - 1  
 White maple - 1  
 White willow - 1

## Trees Planted In City Squares

"I am particularly interested in trees — both the planting and the preservation of our city trees," remarked Councillor G.M. Cox, chairman of the Public Property Committee, when presenting his report at the regular meeting of the City Council yesterday afternoon.

The report reads as follows: —  
 "During the month we planted 18 young trees in Hillsboro square, 6 in King Square and 6 in Rochford Square.

"I regret that the planting of these has not met with the approval of the Playground Commission. We had no intention of interfering in any way with the children's games. The complaint I understand is that the trees hampers their baseball games. I had no idea that the squares were ever intended to be used as ball fields. My understanding was that the squares were to be a safe place for little children to play under supervision, and the games provided would indicate that this was the purpose. A baseball field is not a safe place for little children, and the squares are not suitable because they are in residential sections, and nobody knows where the ball will land. There are plenty fields available for baseball, besides the school grounds, the Elm Ave., Brighton Road, Victoria Park fields and the old dump, and leave the squares to the little children.

"The work of cleaning up the wood strip along Brighton Road is about completed and with the approval of the Council I think we should continue the work through the larger wood lot.

"Our Experimental lawn at the West of the Park has been completed. We had to run a temporary fence around it for protection, and in time we hope to have a carpet of grass. This spot will afford a picnic ground for those who have no cars. We plan on some benches and tables in the grove, and it has all the advantages of the country right in the city.

"I wish to express my appreciation to Mr. Parent, Supt. of the Experimental Farm for the interest he has taken in these projects, and for his advice and loan of equipment."

*Guardian June 14/49*

*Palmer May 28 1940*

HILLSBOROUGH PARK. — Those nice grounds have recently been very much improved by the managing committee. A large number of trees in horse chestnut, mountain ash, maple &c., have been planted to take the place of those destroyed during the past two years. The committee intend making further improvements as soon as their funds will permit, by cleaning and improving the walks through and around the Park, thereby making it a desirable place of resort for the general public. They trust their efforts in this direction will be sustained by the City government in causing the police to pay an occasional evening visit to Hillsborough Park.

The annual meeting of the 'P. E. Island fish and game association' was held last evening at the office of R. R. Fitzgerald, Esq., the president being in the chair. There was quite a large attendance of the members, and from the tone of the discussion we judge that the association is very determined to put a stop to all netting and spearing of trout in the few streams left worth going to for a day's sport. A communication was read from Hon. Chas. H. Tupper, Minister of Marine and Fisheries, and also from E. Hackett, Esq., Inspector of Fisheries, in which both express themselves as in full sympathy with the efforts of the association, and promising to do all in their power to have the fish





JUNE 7, 1951

es Degree



renault, son of Mr. ...  
... who received his Arts degree at St. ...  
... Mr. Arden ...  
... until 1944 when ...  
... Joseph's University ...  
... intends to study ...  
... Ste. Anne de la ...

NOTICE. — Church ...  
... June 10th. New ...  
... School at 10.00 ...  
... Service 11 o'clock ...  
... 10 P. M. Fredericton ...  
... Roy Jones in charge

ature

d Life

BOOKMAN

IGHTY DOLLAR

"almighty dollar" is ...  
... Washington Irving ...  
... son has this coup-

for which all vir- ...  
... sold ...  
... every vice — al-

has this to say ...  
... "I cannot easily buy ...  
... ite my thoughts in ...  
... only ruled for dol- ...  
... The teacher who ...  
... the Book of Eccles- ...  
... that "money an- ...  
... But the con- ...  
... sideration must be tak- ...  
... sideration. He is ...  
... ne social and eco- ...  
... on into which in- ...  
... sive have placed the ...  
... ys: "By much sloth ...  
... decayeth and

# How Charlottetown Became A City Of Beautiful Trees

The old-time practice of celebrating Queen Victoria's birthday by planting trees along the streets and public squares of Charlottetown originated sixty-seven years ago with the Charlottetown Arbour Society, and was continued with very beneficial results for several years. The following list of persons who participated in the inauguration of this movement on May 24, 1884, and who were primarily responsible for the beautification of the City, is taken from an old copy of The Examiner, now in the possession of Miss Helen M. Hobkirk, of the Charlotte Residence, to whom The Guardian is indebted for its republication:

### Queen Square

Trees were planted by: George Arbuckle, golden willow; Mrs. H. Beer, cherry (2), white birch; George Bremner, willows (2); James Beales, birch (3); F.H. Beer, rock maple; W.W. Beer, white maple; S.F. Beer, rock maple and oak; A.B. Brown, mountain ash; F.J. Conway, rock maple; Senator Carvell, rock maple (4); Patrick Cullen, white birch (3); W.F. Carter, rock maple; L.H. Davies, elm (1), limes (3); Miss Desbrisay, choke cherry; R.R. Fitzgerald, lime; Hon. D. Ferguson, rock maple (6); twin birch; Rev. Dr. Fitzgerald, white maple, poplar, white birch, elm, and rock maple, (1 each).

S.D. Fraser, horse chestnut, weeping elm, golden willow; William H. Flindley, rock maples (2); J.L. Grant, golden willow; Mrs. D. Hobkirk, birches (2), oaks (2); H. Hazard, rock maples (2), juniper; William Harris, Jr., mountain ash; Gordon Laird, horse chestnut; William Laird, rock maple, Rennie Laird, elm; London House, willow; John Longworth, elms (2); Lavinie & Hazard, mountain ash; D.C. Martin, mountain ash, white birch; E.W.L. Moore, rock maple; A. Murray, rock maple, mountain ash (3); John T. Mellish, golden willow; E. Mellish, rock maple; James W. Mullally, birch; F.T. Newbery, elm, oak, white birch, and rock maple; Arthur Newbery, red dog trees (8), mountain ash, choke cherry; A.A. MacDonald, oaks (4), elm, rock maple; H.C. MacDonald, elm; A.B. MacKenzie, white birch, elm, horse chestnut, mountain willow; Donald MacKenzie, rock maple, white birch, golden willow and mountain ash;

Alex. D. MacLeod, horse chestnut, mountain ash, and white birch; J.D. MacLeod, golden willows (2), oak; A.H. MacNeill, white birch, W.W. Sullivan, rock

maples (4); D.B. Stewart, elm; Salvage Corps, birch (2), Norway maples (2); Frank Sterns, birch, D. Sterns, rock maple, John Scott, birch; Dr. Scott, birch; James M. Sutherland, mountain ash and horse chestnut; G.W. Taylor, white birch; Dr. Warburton, rock maple; William Weeks, white birch; William A. Weeks, Jr., rock maple; A.B. Warburton, mountain ash; R.T. Weeks, horse chestnut; George J. Wright, elms (2).

### Hillsborough Square

Nell MacLeod and Benjamin Robers, rock maples (14); Charles Palmer, rock maple, horse chestnut, black walnut, birch, juniper, and thorn, (13); William Kennedy, rock maple, poplar, wild cherry, and birch (7); Fred De St. Croix Brecken, horse chestnut, maples, etc. (4); Joseph Unsworth, black walnut and birch; Patrick McQuaid (Examiner), maples (2); A.A. MacLean, black walnut and birch; Archibald MacNeill, walnut, maple, birch and golden willows (17); William Murphy, Thos. Caseley, and others.

### King Square

F. Herbert Beer, elms (2); C.C. Gardiner, elms (2) and American rock maple; Dr. Beer, elms (2); John Ball, American rock maple and Island rock maple; George R. Beer, maples (2) and white birch; A.L. Bridges, white birches (6); W.W. Beer, American rock maple, and white maple; F.W. Moore, white birches; G. Frank Beer, white willow; George MacLeod, elms; E.W. Dawson, white birches (3); John MacLeod, elm and Norway maple; Henry Love, white birch; Rev. Mr. Wadman; L.L. Beer, Rock Maples (2) and white birch.

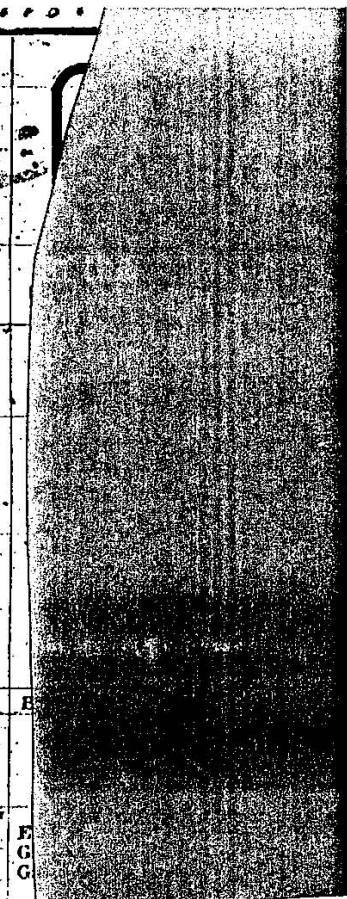
### Rochford Square

Trees were planted for and by the following persons: Lieutenant Governor Avalland, Hon. T.W. Dodd, Rev. G.W. Hodgson, Rev. K. McLennan, Rev. W.B. King, Rev. E.A. Harris, Mrs. Ralph Peake, Mrs. Annand, T. Handra-

This UNION LABEL appears in



every TIP TOP garment



han, Mr. Haslewood, J. Nicholson, T. McLean, Mrs. R. Cottor, A. Martin, J. Bethune, Dr. Dodd, H.J. Cundall, Miss Hobkirk, Miss M. Hobkirk, H. Reid, R. Harris, Parker Carvell, W.C. Morris, Sr. Miss K. Wright, Miss E. Wright, L. Watson, Mrs. W.G. Harris, Mrs. W.L. Cotton, H. Heine, Clare Harris, Mrs. W.L. Cofton, H. Heine, Clare Harris, Charlie Harris, Miss S. Harris, George Davies, J. Clinton, W. Strickland, Nathaniel De Courcey, W. Murray, Walter Cotton, Frank Cotton, Miss Winifred Cotton, St. Peter's schoolboys, St. Peter's schoolgirls, Miss Harvie, school children, Donald Nicholson

Continued on page 11

NO TO OUR

Beginning JUNE 18 for S ...  
... open on MONDAYS, TUESDAYS ...  
... from 8 A.M. o'clock to 4 o'clock ...  
... 8 o'clock A.M. to 12:30 o'clock ...  
... 8 A.M. o'clock to 1 o'clock P

W.K. Roger

GENERAL ...  
... CHARLOTTETOWN ...  
... Phone 5

JUNE 9, 1951

## How Charlottetown

Continued from page 3

Miss Nicholson, John Crockett, Ed. Walsh, John Mills, J. Turnbull, J. Rush, Ben Crosby, Robert Crosby, Dave Byers, T. Shepherd.

### Public Streets

Among those who planted trees on the streets were: William Murray, who planted seven very fine young elms in front of his property on Pownal Street; F.S. Moore, who contributed several rock maples to Prince Street; Dr. Warburton, who planted a beech and a rock maple on Great George Street, and Dr. Robins who planted a graceful yellow birch in front of his office on Great George Street; Robert Taylor, planted a number of the trees in front of his residence on the corner of Cumberland and Grafton Streets; Henry Weeks has planted three trees in front of his residence on Pownal Street; Phillip Large, John Shea, and McKie & McDougall have each planted very nice trees opposite their respective places of business, on Upper Great George Street.

### Mr. Mackinlay's Report

Mr. Thos. Mackinlay reported on the situation of several sets of trees at present growing in the

city. Those planted by the Hon. James Duncan were eleven feet apart, and very much too near, having grown to touch the corner of the house and also overhang the fence in some cases. Various other sets were twelve, thirteen and fifteen feet; all these latter on Prince Street. In front of Mr. Thomas Alley's house on Prince Street were four trees at eighteen feet, but these, which are pretty well grown, show that a much greater distance is advisable where possible.

In Great George Street (south-east end), the present location of gas pipes, drain, etc; on the east side, would compel any planting if done without altering the arrangement of the street, to be at a minimum distance of twenty or twenty-four feet.

### Queen Square Gardens

At a meeting of the public garden committee, a subscription list was opened for the purpose of defraying the expenses of beautifying Queen Square, it being decided to lay off and edge the walks, plant flowers, stake trees, etc. Mr. Arthur Newbery was requested to secure the services of an experienced person — one

from the Public Gardens, Halifax, if possible — to take charge of the Square.

The chairman was requested to draw up a memorial, petitioning the Dominion and Local Governments, as well as the City Council, for a grant to meet the expenses. A committee is also to call upon persons interested for subscriptions. Ladies wishing to plant flowers can have beds allotted to them on application to the secretary. Every precaution will be taken to protect the grounds.

### Suggestions

An avenue of elms and rock maples leads from Pownal to Rochford Streets, along the south side of the square; thence along the west end of the square the avenue is continued to Fitzroy Street. It is suggested that in the near future Fitzroy Street should be carried across Government Pond, and into the Brighton Road. A complete avenue for foot passengers, and a broad street way of eighty feet in width would thus be formed, leading from the Main Street direct to the Park. The avenue at the south side of the square will also lead to Government House bridge, along Kent Street.

If Esplanade Street were to be carried across the Douse property to connect with West Street, which connects with Kent Street at the



TIMELY NO  
CONN  
Silver  
Mix

Paul L. Reinhardt of Burlington, Wisconsin, one of the most progressive breeders of mink, foxes and marten and a man who has held many prominent official positions in various fur farming associations has recently returned from Europe. Those who attended the International Fur Breeders' Conference at Charlottetown some years ago will remember Paul, particularly for his faith in Silver Fox and its eventual comeback. He has been one of the principals in the advertising campaign carried on in the United States to restore the prestige of Silver Fox and has pulled off some very fine advertising stunts. A letter from Mr. Reinhardt which is published in a recent Black FOX

Drill Shed, and Kent Street continued along the shore line of Government House grounds, a continuous street would then lead through the most beautiful part of the town, from the Esplanade to Victoria Park.

### Editorial Comment

In commenting on the above activities The Examiner of May 26, 1884 remarked editorially: "Never, we think — though the day was rainy — did the Queen's birthday celebration pass off with more general satisfaction; and it is worthy of note that no one was killed, drowned, or even hurt. The tree-planting was confined to no class, rich and poor, learned and ignorant, old and young, men in public positions and men in private life planted trees ... Having all sorts and conditions of the people interested in the undertaking, we have an additional guarantee that the trees will be protected against the assaults of their enemies. Strolling cows and bad boys will be watched; and both, we are bound to say, will be punished with the utmost rigor of the law. Many of those who planted trees on Rochford Square have, we observe, placed 'protectors' round their respective trees, and their example might well be followed. "Great credit is due the general committee of the Arbour Society as well as the sub-committees and secretaries for each of the Squares; and Messrs. R.R. Fitzgerald and A.B. Warburton deserve special mention as the projectors of the movement."

Magazi of his interest in Europe people, and to start v German gone th as in hardly are still small tion po seems whole

"The more nual upe basis. A the ma for the and the room ar pen or very p there is tic culti is wide populari availabi son is cessors thods of a prod beautifu tiny ch promoti enough agraph.

"In G ber of Stone They ar priv They pu ten into till petit practical ing pur someim breeding ever, on tens and the desi operatio via Par are nov home on too ther marten.

"It is also to can co

# PLAN NOW TO BECOME A MEMBER MARITIME BLUE CROSS-BLUE SHIELD

CONSULT THE GROUP LEADER IN YOUR DISTRICT

Listed below are the persons who are the Group Leaders through- Queen's County. Information, application forms, etc., can be obtain- ed from these community leaders who are co-operating with Maritime Blue Cross-Blue Shield in making this voluntary non-profit Health-Care Plan available to you until June 23rd.

DISTRICT	SECRETARY
Aiton Road	Miss F. Fisher
Albany Plains	Mrs. Andrew Doyle
Alexandra	Mrs. George MacLennan
Anglo-Itustico	Mrs. Ernest Bullman
Appleton	Mrs. Lewis Gordon
Aryle Shore	Mrs. John D. MacPhail
Auburn	Mrs. Edw. Callaghan
Avondale	Mr. James O'Donnell
Bellevue	Mrs. Stuart MacPherson

DISTRICT	SECRETARY
Millview	Mrs. Walter Crane
Montague East	Mr. Edward McKenna
Montague West	Mr. Wilbur Dalcy
Mt. Albion	Mrs. Ansley Hicks
Mt. Buchanan	Mrs. Peter MacDonald
Mt. Herbert	Mr. James Munn
Mt. Mellick	Mrs. Beatrice MacRae
Mt. Stewart	Mrs. Arthur MacLauchlan

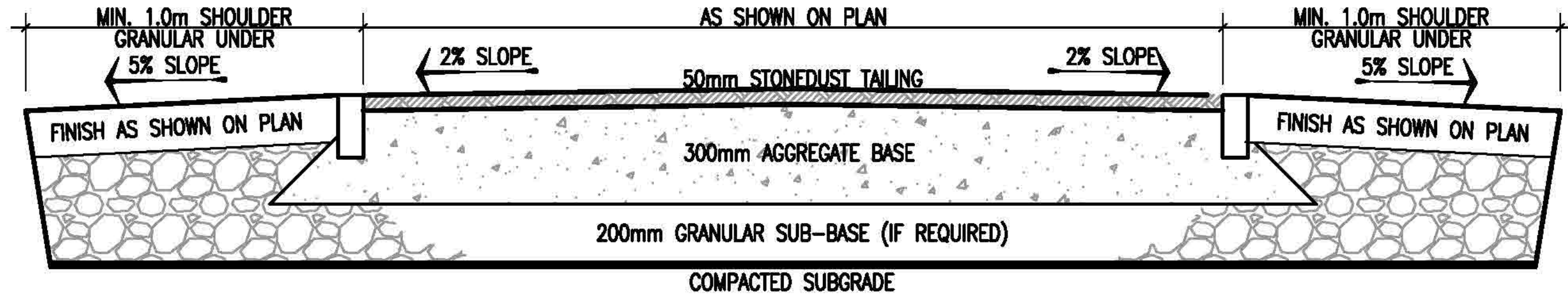
## SHORTHORN BI

Our Association Bulls are stan- places:—



## APPENDIX - Stonedust Walkway Example Detail

Typical stonedust trail details indicated suggested base and trailing depths.  
Further site investigation for the squares will determine modifications to the  
detail in order to customize for the site specific conditions.







Hillsborough Square image credit [www.historicplaces.ca](http://www.historicplaces.ca)



Rochford Square – image credit [www.historicplaces.ca](http://www.historicplaces.ca)











*These squares have been sources of civic pride since the first community tree planting took place in 1884." City of Charlottetown Website*

